

APH: **611.8** CDL: **7.687**

GPH: **685.9** CertNo: **285501**

**BOAT**

Class **FIRST 32S5 (DK)**  
Designer **J.BERRET**  
Builder **BENETEAU**  
Age date **01/1987**  
Series date **01/1987**  
Offset file **E215.OFF**  
Data file

**HULL**

Length Overall **9.446 m**  
Maximum Beam **3.264 m**  
Draft **1.819 m**  
Displacement **4,234 kg**  
DLR **7.4981**  
IMS Division **Cruiser/Racer**  
Dynamic Allowance **0.259%**  
Age Allowance **0.487%**

**PROPELLER**

Installation **Shaft exposed**  
Type **Folding 2 blades**  
Diameter **0.430m**

**CREW**

Maximum weight **375 kg**  
Minimum weight **281 kg** \* when applied  
Non Manual Power **No**  
Crew Arm Extension

**SAIL AREAS (m²)**

	Measured	Rated
Mainsail	<b>29.01</b>	<b>29.54</b>
Headsail Luffed	<b>26.69</b>	<b>26.69</b>
Headsail Flying		
Symmetric	<b>55.07</b>	<b>55.07</b>
Asymmetric		

**STORM SAIL AREAS (m²)**

Trysail **8.68**  
Storm Jib **7.17**  
Heavy Weather Jib **19.36**

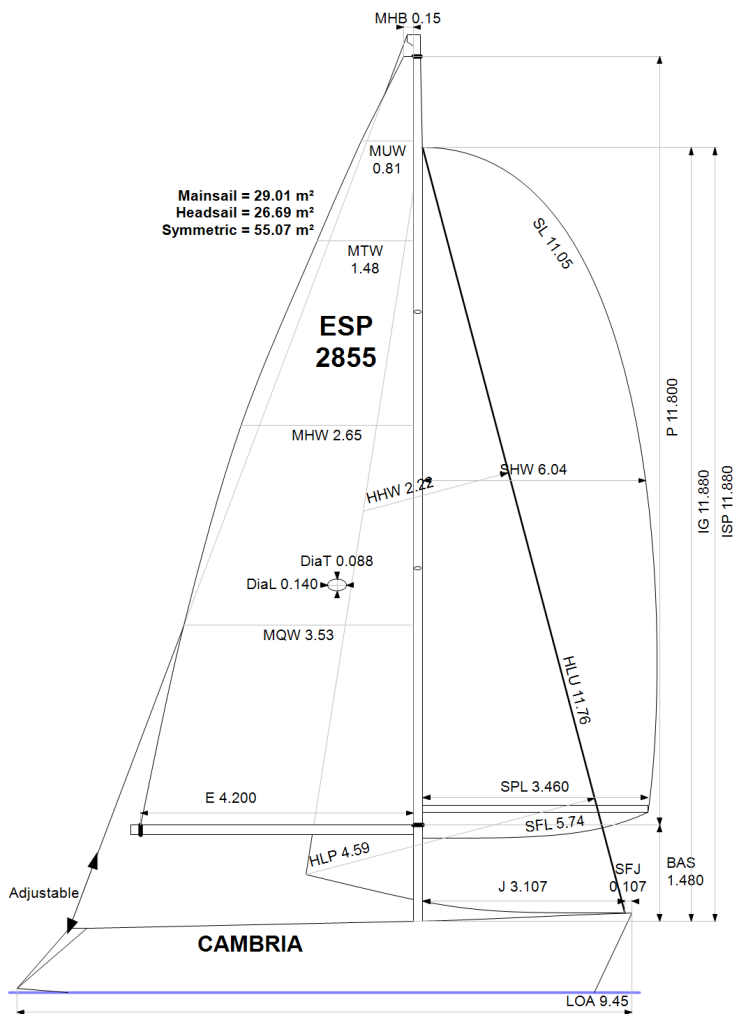
**SAIL LIMITS**

Headsails **5**  
Spinnakers **4**

**STABILITY**

Righting Moment **72.2 kg·m**  
Stability Index **115.5**

*The owner and any other person in charge is responsible that boat is complying with her certificate in accordance with RRS 78.1 and ORC Rule 304.*



**Rated boat velocities in knots**

Wind Velocity	6 kt	8 kt	10 kt	12 kt	14 kt	16 kt	20 kt
Beat Angles	42.9°	41.4°	41.2°	40.2°	39.6°	39.5°	39.9°
Beat VMG	3.17	3.80	4.26	4.53	4.62	4.65	4.64
52°	4.83	5.69	6.27	6.51	6.60	6.65	6.65
60°	5.10	5.97	6.45	6.68	6.79	6.84	6.87
75°	5.31	6.18	6.60	6.84	7.01	7.14	7.25
90°	5.25	6.17	6.68	6.94	7.12	7.34	7.67
110°	5.15	6.21	6.74	7.07	7.39	7.68	7.99
120°	4.97	6.05	6.66	7.01	7.33	7.68	8.31
135°	4.46	5.48	6.32	6.77	7.10	7.44	8.20
150°	3.79	4.81	5.69	6.39	6.79	7.10	7.79
Run VMG	3.28	4.17	4.94	5.65	6.26	6.69	7.29
Gybe Angles	146.6°	151.4°	153.8°	159.2°	173.9°	179.0°	179.0°

Time Allowances in secs/NM							
Wind Velocity	6 kt	8 kt	10 kt	12 kt	14 kt	16 kt	20 kt
Beat VMG	1136.1	947.4	844.6	795.5	779.3	773.5	775.2
52°	745.0	632.5	574.4	552.9	545.2	541.7	541.5
60°	706.0	602.7	557.8	539.0	530.2	526.2	524.1
75°	677.7	582.8	545.8	526.6	513.5	504.3	496.5
90°	685.4	583.3	539.2	518.8	505.5	490.7	469.1
110°	699.7	579.8	534.0	509.0	486.9	468.5	450.4
120°	724.8	595.2	540.5	513.8	490.9	468.5	433.1
135°	806.7	657.1	569.7	531.9	507.4	483.6	439.2
150°	949.2	748.4	633.1	563.2	530.1	506.9	462.4
Run VMG	1096.0	863.4	728.5	636.9	575.4	538.5	493.6
Selected Courses							
Windward / Leeward	1116.1	905.4	786.5	716.2	677.4	656.0	634.4
All purpose	858.9	708.6	630.6	589.2	566.7	551.6	532.2

Single Number Scoring Options		
Course	Time On Distance	Time On Time
Windward / Leeward	751.3	0.7986
All purpose	611.8	0.9807

### Custom scoring options for Spain

Single Number	Time On Distance
Coastal/Long Distance	666.2
Triple Number Coastal/Long Distance Low	783.8
Triple Number Coastal/Long Distance Medium	607.3
Triple Number Coastal/Long Distance High	548.1
Triple Number Windward/Leeward Low	1010.8
Triple Number Windward/Leeward Medium	745.7
Triple Number Windward/Leeward High	653.2

Performance Curve	6 kt	8 kt	10 kt	12 kt	14 kt	16 kt	20 kt
Coastal/Long Distance	1114.1	850.8	709.5	628.5	588.2	557.1	506.2



Data in meters/kilograms (Metric)

**HULL AND APPENDAGES (Lightship Trim)**

Class	<b>FIRST 32S5 (DK)</b>	LOA	<b>9.446</b>	VCGD	<b>0.073</b>
Measurement	<b>06/02/2017</b>	Max. Beam	<b>3.264</b>	VCGM	<b>0.091</b>
HIN		Draft	<b>1.819</b>	RM Measured (kg·m)	<b>72.2</b>
Plan review		Displacement	<b>4,234</b>	RM Default (kg·m)	<b>72.4</b>
Hull construction	<b>Solid</b>	Wetted area	<b>19.88</b>	Limit of positive stability(°)	<b>116.1</b>
Aramid Hull Core	<b>No</b>	IMS L	<b>8.327</b>	Stability Index	<b>115.5</b>
Carbon Rudder	<b>No</b>	LSM0	<b>8.265</b>		
Light stanchions	<b>No</b>	Acc. length	<b>9.446</b>		
Trim tab	<b>No</b>	Sink (kg/mm)	<b>14.74</b>		

**PROPELLER**

Propeller Type	<b>Folding 2 blades</b>										
Installation	<b>Shaft exposed</b>	PRD	<b>0.430</b>	PSD	<b>0.025</b>	PSA	<b>21.2°</b>	ST1	<b>0.030</b>	ST4	<b>0.058</b>
Twin screw	<b>No</b>	PBW	<b>0.110</b>	PHD	<b>0.053</b>	ESL	<b>1.080</b>	ST2	<b>0.104</b>	ST5	<b>0.210</b>
Hydro generator	<b>No</b>	PIPA	<b>0.0047</b>	PHL	<b>0.124</b>			ST3	<b>0.104</b>		

**RIG**

Forestay tension	<b>Aft</b>	P	<b>11.800</b>	E	<b>4.200</b>
Inner stay	<b>None Fitted</b>	IG	<b>11.880</b>	J	<b>3.107</b>
Carbon mast	<b>No</b>	ISP	<b>11.880</b>	BAS	<b>1.480</b>
Headsail furler	<b>No</b>	MDT1	<b>0.088</b>	FSD	<b>0.036</b>
Mainsail furler	<b>No</b>	MDL1	<b>0.140</b>	SFJ	<b>0.107</b>
Articulated bowsprit	<b>No</b>	MDT2	<b>0.088</b>	SPL	<b>3.460</b>
Non-circular rigging	<b>No</b>	MDL2	<b>0.106</b>	WPL	
Fiber rigging	<b>No</b>	TL	<b>1.530</b>	TPS	
Runners/Checkstays	<b>0</b>	MW	<b>0.140</b>	BD	<b>0.150</b>
Spreaders	<b>2</b>	GO	<b>0.164</b>	MWT	<b>94.00</b>
				MCG	<b>4.950</b>

**FLOTATION AND STABILITY**

Calculation method	<b>Poles inclining</b>	SFFP	<b>1.058</b>	SAFP	<b>8.378</b>	W1	<b>50.0</b>	PD1	<b>507.9</b>	WD	<b>9.400</b>
Flotation Date	<b>06/02/2017</b>	FFM	<b>1.188</b>	FAM	<b>0.988</b>	W2	<b>50.0</b>	PD2	<b>507.0</b>	PLM	<b>9000.00</b>
Measurer	<b>ESP 857</b>	FF	<b>1.190</b>	FA	<b>0.987</b>	W3	<b>50.0</b>	PD3	<b>513.4</b>	GSA	<b>1.0</b>
Comment		LCFcl	<b>5.196</b>	LCFsh	<b>5.440</b>	W4	<b>50.0</b>	PD4	<b>522.1</b>	RSA	<b>1.0</b>
		SG	<b>1.0270</b>	HBI	<b>1.094</b>						

**INVENTORY**

TANKS	<i>Id</i>	<i>Description</i>	<i>Sp.Wght</i>	<i>Capacity</i>	<i>Condition</i>	<i>LCG</i>	<i>VCG</i>
	1	GASOIL PLASTICO	0.9000	60	45	3.40	
	1	AGUA PLASTICO		150	0	4.50	
				<i>Total deductible</i>		<b>14</b>	<b>3.40</b>
OTHER ITEMS	<i>Id</i>	<i>Kind</i>	<i>Description</i>	<i>Weight</i>	<i>LCG</i>	<i>VCG</i>	
	1	Battery		12	5.87		
	1	Battery		12	5.87		
	1	Engine	VOLVO-PERKINS 16-18				
				<i>Total deductible</i>		<b>0</b>	



**MAINSAIL**

<i>Id</i>	<i>MHB</i>	<i>MUW</i>	<i>MTW</i>	<i>MHW</i>	<i>MQW</i>	<i>Area</i>	<i>Meas.Date</i>	<i>Maker</i>	<i>Material</i>	<i>Comment</i>
1	0.15	0.81	1.48	2.65	3.53	29.01	20/08/2016		Unknown	

**HEADSAIL**

<i>Id</i>	<i>HHB</i>	<i>HUW</i>	<i>HTW</i>	<i>HHW</i>	<i>HQW</i>	<i>HLP</i>	<i>HLU</i>	<i>Btn</i>	<i>Flying</i>	<i>FT</i>	<i>Area</i>	<i>Meas.Date</i>	<i>Maker</i>	<i>Material</i>	<i>Comment</i>
001	0.09	0.56	1.08	2.22	3.44	4.59	11.76	No	No		26.69	25/01/2017		Unknown	

**SYMMETRIC SPINNAKER**

<i>Id</i>	<i>SLU</i>	<i>SLE</i>	<i>SL</i>	<i>SHW</i>	<i>SFL</i>	<i>Area</i>	<i>Meas.Date</i>	<i>Maker</i>	<i>Material</i>	<i>Comment</i>
002	11.05	11.05	11.05	6.04	5.74	55.07	08/08/2017	NS	Unknown	
001	11.60	11.60	11.60	5.67	5.63	54.73	25/01/2017		Unknown	