

APH: **575.4** CDL: **8.767**

GPH: **646.5** CertNo: **934101**

**BOAT**

Class **DUFOUR 34**  
Designer **Felci**  
Builder **Dufour**  
Age date **02/2007**  
Series date **07/2002**  
Offset file **DUF34PERF.off**  
Data file

**HULL**

Length Overall **10.300 m**  
Maximum Beam **3.482 m**  
Draft **1.936 m**  
Displacement **5,400 kg**  
DLR **6.4962**  
IMS Division **Cruiser/Racer**  
Dynamic Allowance **0.141%**  
Age Allowance **0.487%**

**PROPELLER**

Installation **Strut**  
Type **Folding 2 blades**  
Diameter **0.430m**

**CREW**

Maximum weight **600 kg**  
Minimum weight **450 kg** \* when applied  
Non Manual Power **No**  
Crew Arm Extension

**SAIL AREAS (m²)**

	Measured	Rated
Mainsail	<b>35.47</b>	<b>36.42</b>
Headsail Luffed	<b>34.36</b>	<b>34.36</b>
Headsail Flying		
Symmetric	<b>75.69</b>	<b>75.69</b>
Asymmetric		

**STORM SAIL AREAS (m²)**

Trysail **10.19**  
Storm Jib **8.80**  
Heavy Weather Jib **23.76**

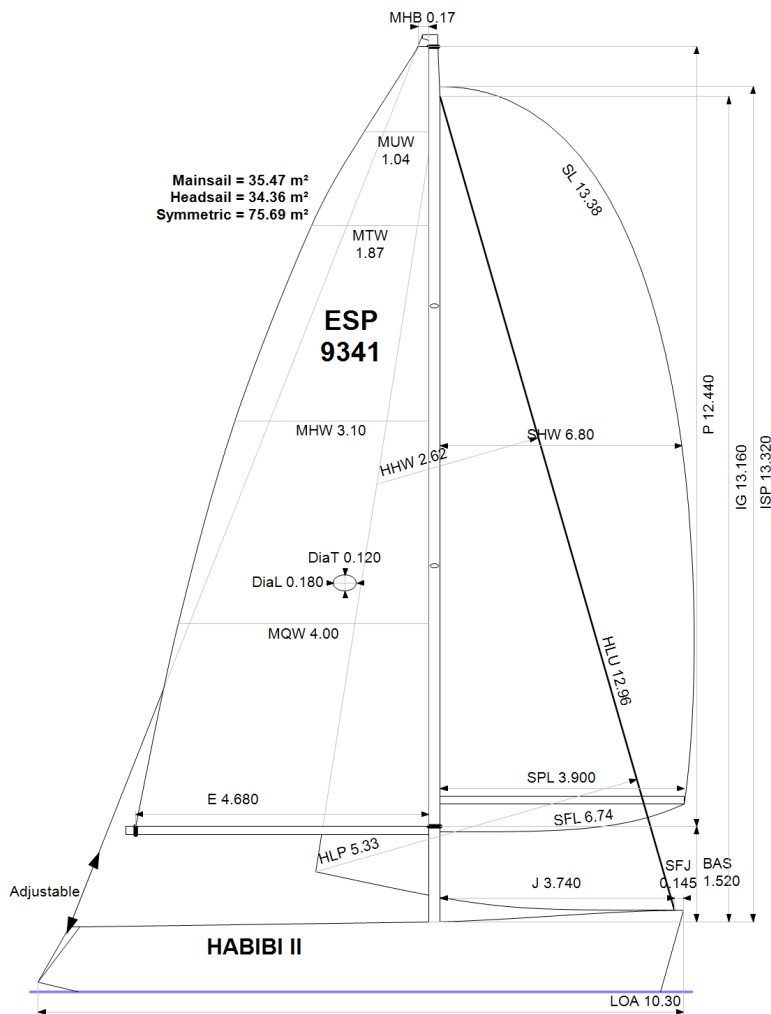
**SAIL LIMITS**

Headsails **5**  
Spinnakers **4**

**STABILITY**

Righting Moment **113.5 kg·m**  
Stability Index **113.5**

*The owner and any other person in charge is responsible that boat is complying with her certificate in accordance with RRS 78.1 and ORC Rule 304.*



**Rated boat velocities in knots**

Wind Velocity	6 kt	8 kt	10 kt	12 kt	14 kt	16 kt	20 kt
Beat Angles	43.5°	41.8°	41.4°	40.2°	39.4°	39.0°	39.0°
Beat VMG	3.30	3.98	4.52	4.84	4.97	5.03	5.04
52°	5.07	6.01	6.66	6.96	7.08	7.13	7.16
60°	5.38	6.32	6.86	7.13	7.27	7.33	7.38
75°	5.62	6.54	7.01	7.28	7.49	7.64	7.77
90°	5.55	6.53	7.06	7.36	7.57	7.82	8.21
110°	5.42	6.56	7.15	7.52	7.87	8.18	8.54
120°	5.25	6.40	7.07	7.45	7.82	8.22	8.91
135°	4.75	5.84	6.72	7.20	7.55	7.94	8.78
150°	4.02	5.09	6.02	6.77	7.21	7.54	8.29
Run VMG	3.48	4.41	5.22	5.96	6.57	7.05	7.71
Gybe Angles	145.1°	150.2°	152.3°	157.4°	170.0°	178.4°	179.0°

Time Allowances in secs/NM							
Wind Velocity	6 kt	8 kt	10 kt	12 kt	14 kt	16 kt	20 kt
Beat VMG	1090.7	904.5	796.5	743.1	723.9	715.7	713.9
52°	710.3	599.3	540.7	517.1	508.7	504.8	503.0
60°	669.5	570.0	524.6	504.8	495.4	491.0	488.1
75°	640.2	550.2	513.4	494.3	480.9	471.4	463.1
90°	648.5	551.6	509.6	489.1	475.4	460.4	438.4
110°	664.5	549.1	503.3	478.9	457.5	440.1	421.8
120°	685.1	562.7	509.2	483.0	460.4	438.2	404.2
135°	757.6	616.2	535.8	500.0	476.7	453.7	410.1
150°	895.8	707.2	597.9	531.4	499.3	477.3	434.4
Run VMG	1034.4	816.4	689.2	604.0	547.7	510.3	467.0
Selected Courses							
Windward / Leeward	1062.5	860.5	742.8	673.5	635.8	613.0	590.5
All purpose	815.8	671.6	594.7	553.5	530.8	515.4	495.6

Single Number Scoring Options		
Course	Time On Distance	Time On Time
Windward / Leeward	707.8	0.8477
All purpose	575.4	1.0427

### Custom scoring options for Spain

Single Number	Time On Distance
Coastal/Long Distance	627.3
Triple Number Coastal/Long Distance Low	743.7
Triple Number Coastal/Long Distance Medium	571.4
Triple Number Coastal/Long Distance High	511.8
Triple Number Windward/Leeward Low	961.5
Triple Number Windward/Leeward Medium	702.7
Triple Number Windward/Leeward High	610.3

Performance Curve	6 kt	8 kt	10 kt	12 kt	14 kt	16 kt	20 kt
Coastal/Long Distance	1059.7	807.9	669.7	590.3	551.0	520.7	472.3



Data in meters/kilograms (Metric)

**HULL AND APPENDAGES (Lightship Trim)**

Class	<b>DUFOUR 34</b>	LOA	<b>10.300</b>	VCGD	<b>0.095</b>
Measurement	<b>27/06/2011</b>	Max. Beam	<b>3.482</b>	VCGM	<b>0.116</b>
HIN		Draft	<b>1.936</b>	RM Measured (kg·m)	<b>113.5</b>
Plan review		Displacement	<b>5,400</b>	RM Default (kg·m)	<b>119.4</b>
Hull construction	<b>Cored</b>	Wetted area	<b>23.90</b>	Limit of positive stability(°)	<b>112.5</b>
Aramid Hull Core	<b>No</b>	IMS L	<b>9.458</b>	Stability Index	<b>113.5</b>
Carbon Rudder	<b>No</b>	LSM0	<b>9.401</b>		
Light stanchions	<b>No</b>	Acc. length	<b>10.300</b>		
Trim tab	<b>No</b>	Sink (kg/mm)	<b>18.46</b>		

**PROPELLER**

Propeller Type	<b>Folding 2 blades</b>						
Installation	<b>Strut</b>	PRD	<b>0.430</b>	EDL	<b>2.130</b>	ST3	<b>0.180</b>
Twin screw	<b>No</b>	PBW	<b>0.107</b>	ST1	<b>0.065</b>	ST4	<b>0.113</b>
Hydro generator	<b>No</b>	PIPA	<b>0.0037</b>	ST2	<b>0.180</b>	ST5	<b>0.305</b>

**RIG**

Forestay tension	<b>Aft</b>	P	<b>12.440</b>	E	<b>4.680</b>
Inner stay	<b>None Fitted</b>	IG	<b>13.160</b>	J	<b>3.740</b>
Carbon mast	<b>No</b>	ISP	<b>13.320</b>	BAS	<b>1.520</b>
Headsail furler	<b>No</b>	MDT1	<b>0.120</b>	FSD	<b>0.033</b>
Mainsail furler	<b>No</b>	MDL1	<b>0.180</b>	SFJ	<b>0.145</b>
Articulated bowsprit	<b>No</b>	MDT2	<b>0.120</b>	SPL	<b>3.900</b>
Non-circular rigging	<b>No</b>	MDL2	<b>0.144</b>	WPL	
Fiber rigging	<b>No</b>	TL	<b>0.820</b>	TPS	
Runners/Checkstays	<b>0</b>	MW	<b>0.180</b>	BD	<b>0.132</b>
Spreaders	<b>2</b>	GO	<b>0.210</b>	MWT	<b>138.40</b>
				MCG	<b>4.370</b>

**FLOTATION AND STABILITY**

Calculation method	<b>Poles inclining</b>	SFFP	<b>0.390</b>	SAFP	<b>9.636</b>	W1	<b>76.7</b>	PD1	<b>574.2</b>	WD	<b>10.840</b>
Flotation Date	<b>28/06/2020</b>	FFM	<b>1.287</b>	FAM	<b>1.043</b>	W2	<b>76.7</b>	PD2	<b>577.4</b>	PLM	<b>9000.00</b>
Measurer	<b>ESP-386</b>	FF	<b>1.293</b>	FA	<b>1.040</b>	W3	<b>76.7</b>	PD3	<b>579.7</b>	GSA	<b>1.0</b>
Comment	<b>TANGONES LCF 5,80</b>	LCFcl	<b>5.750</b>	LCFsh	<b>5.998</b>	W4	<b>76.7</b>	PD4	<b>576.5</b>	RSA	<b>1.0</b>
		SG	<b>1.0270</b>	HBI	<b>1.119</b>						

**INVENTORY**

TANKS	<i>Id</i>	<i>Description</i>	<i>Sp.Wght</i>	<i>Capacity</i>	<i>Condition</i>	<i>LCG</i>	<i>VCG</i>
	GAS	GAS OIL RIGIDO 10 LTS	0.9000	90	<del>40</del>		
	FEC	FECALES RIGIDO VACIO		42	0		
	WAT	AGUA RIGIDO VACIO		105	0	7.25	
	WAT	AGUA RIGIDO VACIO		170	0	2.00	
	CAL	CALENTADOR RIGIDO 10 LTS	0.9000	15	<del>40</del>	2.00	
				<i>Total deductible</i>	<b>18</b>	<b>1.00</b>	

OTHER ITEMS	<i>Id</i>	<i>Kind</i>	<i>Description</i>	<i>Weight</i>	<i>LCG</i>	<i>VCG</i>
	BAT-1	Battery	60 Ah		7.85	
	BAT-2	Battery	60 Ah		7.85	
	BAT-3	Battery	60 Ah		7.85	
	ENG	Engine	VOLVO D1-30B			

*Total deductible*



**MAINSAIL**

<i>Id</i>	<i>MHB</i>	<i>MUW</i>	<i>MTW</i>	<i>MHW</i>	<i>MQW</i>	<i>Area</i>	<i>Meas.Date</i>	<i>Maker</i>	<i>Material</i>	<i>Comment</i>
2021	0.17	1.04	1.87	3.10	4.00	35.47	19/05/2021	NS	Kevlar	

**HEADSAIL**

<i>Id</i>	<i>HHB</i>	<i>HUW</i>	<i>HTW</i>	<i>HHW</i>	<i>HQW</i>	<i>HLP</i>	<i>HLU</i>	<i>Btn</i>	<i>Flying</i>	<i>FT</i>	<i>Area</i>	<i>Meas.Date</i>	<i>Maker</i>	<i>Material</i>	<i>Comment</i>
2021	0.11	0.69	1.31	2.62	3.96	5.33	12.96	No	No		34.36	19/05/2021	N/S	Kevlar	

**SYMMETRIC SPINNAKER**

<i>Id</i>	<i>SLU</i>	<i>SLE</i>	<i>SL</i>	<i>SHW</i>	<i>SFL</i>	<i>Area</i>	<i>Meas.Date</i>	<i>Maker</i>	<i>Material</i>	<i>Comment</i>
2021	13.38	13.38	13.38	6.80	6.74	75.69	19/05/2021	N/S	Nylon	